



WEBBER ACADEMY INFORMATION PACKAGE



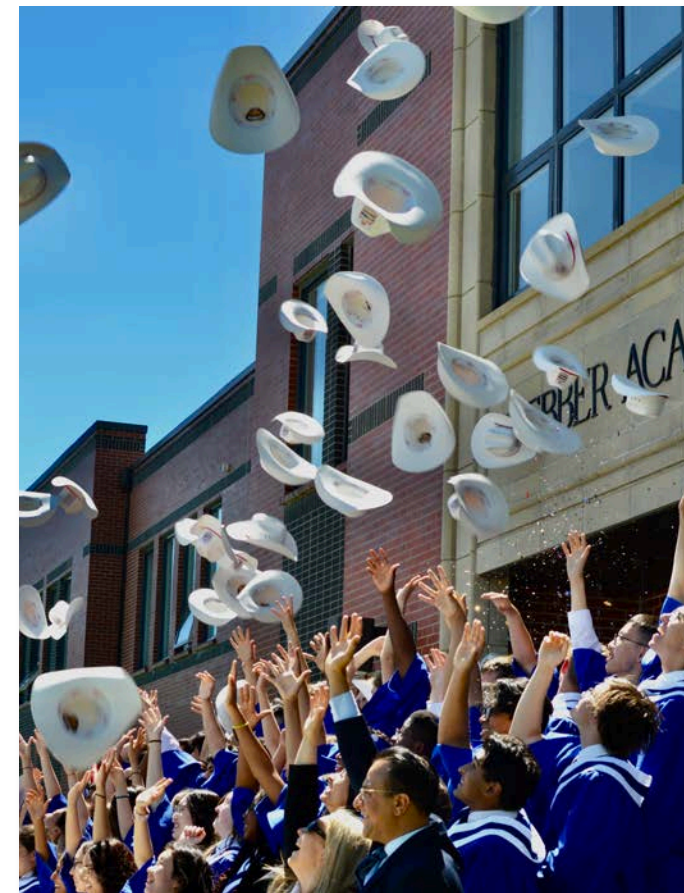


PREPARING STUDENTS TO THRIVE IN UNIVERSITY AND BEYOND

WEBBER ACADEMY IS:

- A non-profit, accredited private school
- Co-educational
- A university preparatory school
- Non-denominational

The school offers a challenging and exciting academic university preparatory programme for students in Junior Kindergarten through Grade 12.



FACULTY OF EXCELLENCE

Webber Academy has attracted a faculty of highly-skilled teachers who are passionate about educating children. Our teachers are professional, enthusiastic, and knowledgeable about the subjects they teach. The profession of teaching is a learning process. As such, our dedicated staff strive to hone their skills through the sharing of ideas and participation in professional development opportunities.

Teachers are committed to providing our students with meaningful classroom instruction, regular homework, and individual attention.

For further information regarding our founders, directors and faculty, please consult our website at webberacademy.ca.



FOUNDER, PRESIDENT AND HEAD OF SCHOOL



Dr. Neil Webber founded the school in 1996. He has spent most of his career in public service: first as a teacher with the Calgary Public and Catholic School Boards, then as an elected representative in the Alberta Government. He was Chairman of Telus Corporation, and has served on numerous other corporate and public boards, including the Conference Board Council of Education.



SCHOOL DAY

The school day at Webber Academy commences at 8:15 a.m. and ends at 3:30 p.m., with staggered recess and lunch breaks for the different divisions. Students in Grades 7-12 do not have a recess break.

8:00 a.m.	Students begin to arrive
8:15 a.m.	Homeroom bell, Grades 7-12
8:20 a.m.	Homeroom bell, Grades 1-6
8:30 a.m.	JK and SK class begins
Lunch Hour:	One hour, staggered for elementary JH/SH have a 50-minute lunch
Recess:	15 minutes JK-Grade 3: 10:15 a.m. & 2:15 p.m. Grades 4-6: 10:15 a.m.

UNIFORM POLICY

At Webber Academy, a traditional dress code enhances school pride, reduces peer pressure, and reinforces the concept of school as a place of learning. Students at Webber Academy are required to wear the school uniform to and from school. The school colours are red, white and navy blue. Dress uniforms and gym wear are required, with optional pieces available for all students. Specific and detailed information regarding the school uniform will be sent to parents upon acceptance to the school.

BUILDING A SCHOOL COMMUNITY

Parents play an integral role in the success of students at Webber Academy. Consistency between home and school is essential if students are to reach their full potential in their endeavours. As such, parents at Webber Academy must agree in advance with the school's philosophies and expectations regarding work habits, deportment, homework, and appearance.

Parents can show their support at home by reading with children, enforcing routines, maintaining consistency in matters of discipline, and supervising homework completion. When the school and home respect one another and work together, they create optimal conditions for learning and growth to occur.

DISCIPLINE AT WEBBER ACADEMY

Effective discipline is based upon providing students with clear, firm guidelines to follow. Students are taught to make positive choices, and are expected to accept responsibility for their own behaviours. Should the occasion arise when a student makes a poor choice or decision, he/she must be willing to accept the consequence that follows.

Students at Webber Academy are expected to exhibit model behaviour to and from school, during school hours, and on all school outings so that they may make these behaviours habit forming. The approach to discipline is effective because it is based on a child's innate and natural ability to be responsible and independent. The acquisition of self-discipline will help children to grow into young men and women of character and integrity, able to stand firm in their beliefs, and make sound decisions in life. The environment at Webber Academy is such that the following is nurtured within each child:

- Caring for oneself and for others
- Recognizing and accepting one's own strengths and weaknesses
- Delaying immediate gratification for long-term gain
- Applying oneself fully to any given task.
- Deciding which principles and beliefs are important in the development of one's compass and conscience in life



Elementary students have the opportunity to experience a hands-on lab assignment within the High School Science Centre



Webber Academy Alumna and Harvard Law School Graduate, Serena Shie with Dr. Neil Webber

SCHOOL PROGRAMME

Webber Academy provides a challenging academic programme for students who have the ability and desire to complete high school and university. At all levels of schooling the regular curriculum, as prescribed by Alberta Education, is enhanced and enriched to provide our students with additional practice in reinforcing basics and developing new skills. We also believe in developing well-rounded students. Therefore, our programme reflects an emphasis on the core subjects of Mathematics, English, Science, Geography/History, as well as instruction in second languages, the fine and performing arts, athletics, and technology.

A variety of experiences are provided which enable the child to:

- Sustain and extend natural curiosity
- Develop independent thinking through meaningful learning experiences
- Use language to communicate effectively
- Develop a positive, realistic sense of self
- Develop cooperative and independent social skills
- Become an independent, lifelong learner



JUNIOR KINDERGARTEN PROGRAMME

Webber Academy offers a full-day Junior Kindergarten programme for students who are developmentally ready for schooling. Students in this programme must turn four years of age by December 31st of the school year that they commence. The programme runs daily, similar to our regular school programme.

Students in the Junior Kindergarten programme will participate in a range of activities including:

- Identifying colours and shapes
- Story-telling and appreciation of books
- Reciting the alphabet, basic phonics and recognizing and printing letters
- Math including recognizing and printing numbers from 1-20 and distinguishing between more, less and equal to
- Drawing, colouring and crafts
- Music classes (with a subject specialist teacher) with a focus on singing songs and developing pitch
- Spanish (with a subject specialist teacher)
- Indoor and outdoor physical education

Most importantly, students at the Junior Kindergarten level develop an appreciation and love of learning!





SENIOR KINDERGARTEN PROGRAMME

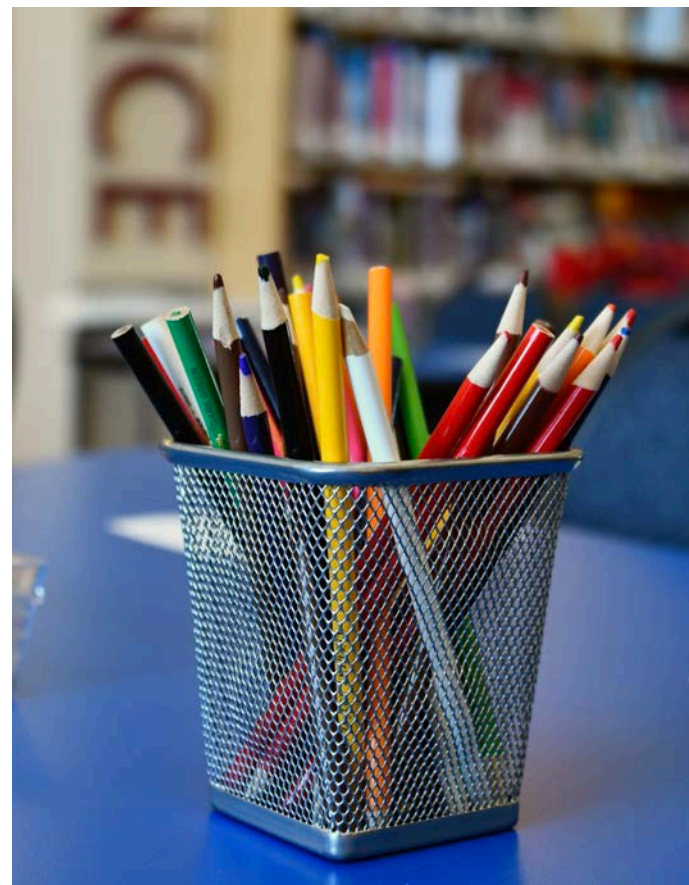
The Senior Kindergarten programme is a full-day programme offered for students who are five years of age, on or before December 31st of the school year that they commence. Thematic centres are an integral part of the programme and students also spend time in activities which will prepare them for our Grade 1 programme. During the course of the Senior Kindergarten year, key areas of focus will be:

- Independent reading
- Story and journal writing
- Math including; basic calculations, problem solving, patterns and estimation
- Arts, crafts and creativity
- Spanish (with a subject specialist teacher)
- Music classes (with a subject specialist teacher)
- Indoor and outdoor physical education

GRADES 1-6 CORE PROGRAMMES

In today's world, strong literacy, numeracy, social, and teamwork skills are essential in whatever career path one chooses. Therefore, our focus is on developing a solid foundation for these skills. At Webber Academy, we believe all students, even those in Kindergarten, need to be articulate in their speech, and literate in their approach to all subjects. A strong foundation in basic mathematical operations leads to an appreciation and enjoyment of the wonderful world of mathematics. Learning to solve problems with inquisitiveness, enthusiasm, and creativity, allows students to further explore more sophisticated math and sciences as they progress through the upper grades.

Students are exposed to print and multimedia materials of all types, and in all subject areas so that they learn how to locate information quickly, depending on the tasks involved. It is important in today's Information Age for children to learn how to access information and how to develop questioning and research strategies to help them to thrive in our rapidly changing world.



SENIOR SCHOOL

JUNIOR HIGH AND SENIOR HIGH PROGRAMMES

In preparing our students for university and beyond, it is our intent to offer students a range of options covering all disciplines.

Our programmes are designed so that upon entering Grade 11, students have had exposure to all disciplines and can make an informed choice when selecting courses for university entrance. Career counselling is provided by the school, and the process begins in Grade 10.

Academic Counselling is provided upon teacher referral for students requiring additional help with areas of academic development.

The core programme includes English, Mathematics, Science, Geography/History, and Physical Education.

From Grade 7 to 9, students must choose two out of the five following subjects, one selection must be a language: Mandarin, Spanish, French, Music (Band) and Computers. Grade 7 students take both Drama and Art. Grade 8 and 9 students choose either Drama or Art.

In high school, a student's choice of course work is based on postsecondary requirements, and the pursuit of academic strengths and personal interests. Webber Academy has instituted the internationally recognized Advanced Placement (AP) Programme. This curriculum provides students with courses enriched beyond the provincial requirements, and university credits may be earned.



Roy Farran Scholarship and Winged Dagger recipient, Bemshima Denga with Head of Senior School, Christina Clouston (left), and Vice President of Administration, Barb Webber (right)



SECOND/THIRD LANGUAGES

In many European countries, it is expected that children will be bilingual, and preferably trilingual, particularly with the ease of international travel. Canada is an important part of the ever-increasing influential Pacific Rim, Central and South American nations, so we feel that Mandarin and Spanish will be most beneficial in the 21st century. We know from many research projects that language skills are best developed at a very early age, and young children much more readily accept the exposure to new languages. At Webber Academy, we believe in offering second and third language instruction to our children, starting in Junior Kindergarten.

All Junior Kindergarten to Grade 6 students have Spanish as part of their programme. Beginning in Grade 4 and continuing to Grade 6, Mandarin is part of the programme.

Upon entering junior high, students begin to have options within their programme. French is added as an option. Spanish and Mandarin also continue to be offered.

The language programmes are offered at different levels from Grade 4 upwards. New students can be accommodated if they have not studied a language before entering Webber Academy.

Webber Academy has a tradition of offering opportunities for travel to countries where the languages of study are spoken (e.g. France, Costa Rica, Spain, and China). Webber Academy is committed to adding new opportunities in the future.



VISUAL AND PERFORMING ARTS

Exposure to cultural activities complements and strengthens our academic programme, allowing youthful creativity and energy to be channelled in different ways. Students are given skilled instruction in developmental programmes in each area of the visual and performing arts.

Modern research shows us that music significantly enhances intelligence and is strongly tied to increased abilities in math and sciences. At Webber Academy, students are taught to listen, develop their first instrument (the voice), and understand the rudiments of musical theory and rhythmic elements. Students are encouraged to take part in the school's choral and instrumental programmes. An appreciation for music is learned early, and it is our goal to instil in our students a lifelong enjoyment of many different musical forms and genres. The school has two concert bands, a wind ensemble and a jazz band at both the Junior and Senior High school levels, as well as three choirs.

Art activities offer children an outlet for expression and creativity. Art can improve the mind, develop critical viewing skills and, at the same time, provide great enjoyment for children. Our emphasis is on developing our students' artistic skills in both creating and critiquing work.

Drama helps even the most reserved student to develop confidence and poise in front of peers. Students learn how to move, project their voices, enunciate with clarity and conviction, explore the dramatic form, and create their own dramatic works. An integral component of drama is body awareness; therefore, dance movements are explored both in drama, and in the physical education programme.





Senior school track athlete participating in the C.I.S.A.A. Track and Field Championships

PHYSICAL EDUCATION AND ATHLETICS

Healthy bodies are a prerequisite to developing healthy minds. Research has shown us that regular exercise helps everyone concentrate better and reduces stress. Recent studies have also shown, however, that the majority of Canada's youth are unfit, even though we know the early years are an excellent time to acquire lifelong habits of regular exercise and recreation. Children need many outlets for their boundless energy, and they also need to be exposed to a variety of well-organized activities.

Students at Webber Academy participate in regular physical education classes and participate in a standardized fitness programme.





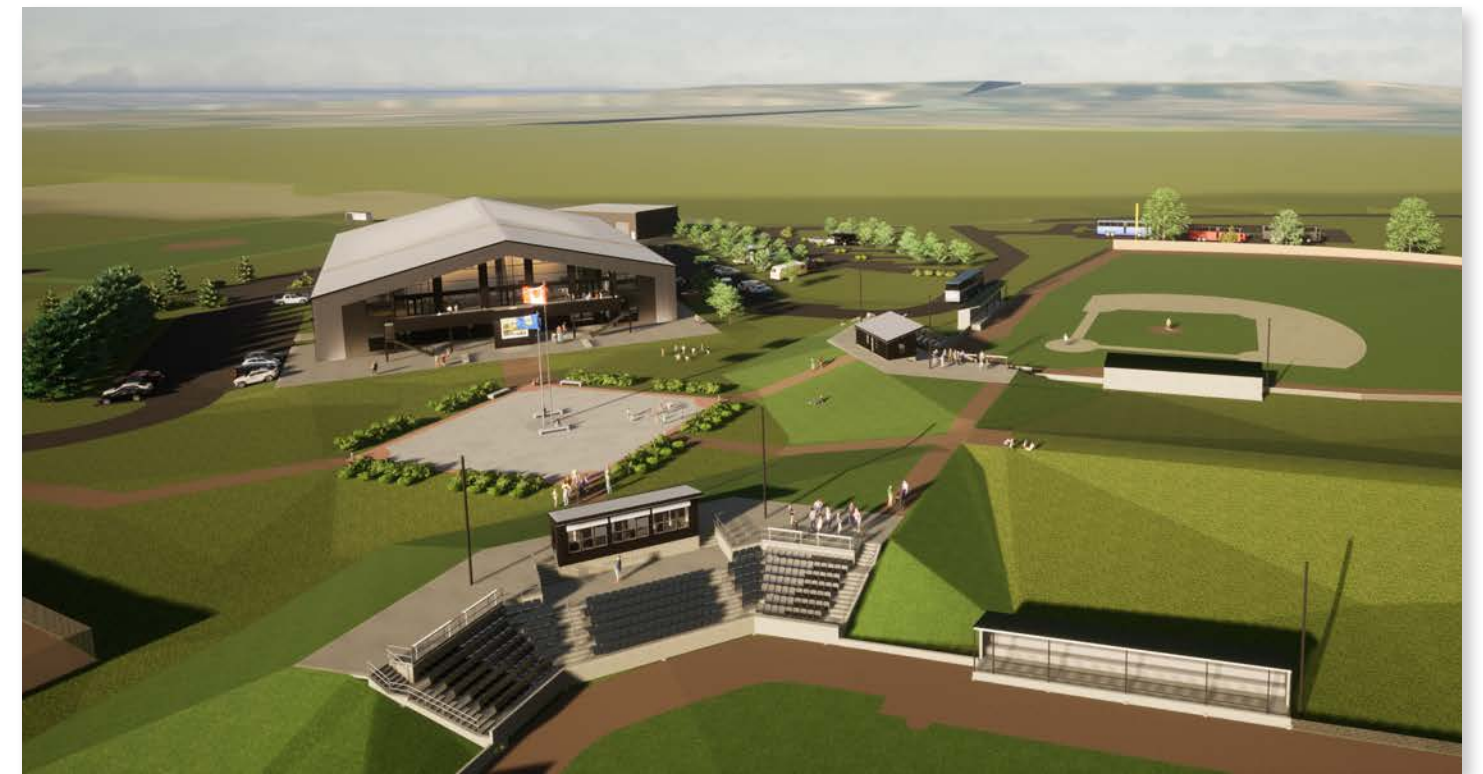
ELEMENTARY ATHLETICS

Webber Academy has a tradition of offering a series of sport based clubs for our elementary students. Although our club offerings change each year based on teacher/student interest we have offered Badminton, Baseball, Basketball, Cross-Country Running, and Volleyball. We also offer an intramural program for our elementary students.



SENIOR SCHOOL ATHLETICS

Athletics in junior high presents the first opportunity of competitive team and individual sports with other schools in the same division; these competitive sports teams are offered outside of the timetable and include cross-country running, golf, volleyball, basketball, badminton, track and field, and soccer. Senior high athletics feature the same sports, with rugby as an addition. The senior high teams are organized into junior varsity and senior varsity groups, depending on the size of group in each sport.



OPENING SPRING 2022

WEBBER ACADEMY ATHLETIC PARK



Webber Academy Athletic Park is set to be a truly remarkable multi-functional sport and recreation facility located just west of the city, in Springbank. The park will feature 4 baseball fields, which will vary in size to allow athletes of all ages the opportunity to utilize this great facility, a soccer pitch, and a state-of-the-art 50,000 square foot, two-storey, multi-purpose, indoor recreation facility. Sitting on 530 acres that overlook the beautiful Rocky Mountains, there is plenty of space for the park to continue to grow and offer additional features.



The Webber Academy Athletic Park will not only be home to Wildcats Baseball, Alberta's newest baseball association, but it will also be able to host a variety of other sports, activities, and events. There will be classrooms for Webber Academy Robotics and A.I. classes and clubs, as well as other fitness rooms, and a clubhouse. This space will be home to future Banner Branches, which are an event to celebrate our athletic teams and their successes over the school year.



TECHNOLOGY

Technology is best learned within the context of applications, activities, projects, and portfolio-based assignments, which are used to replicate real-life situations. Our computer courses enable students to develop and apply important knowledge, skills, and attitudes, so students can provide well-designed and aesthetically effective communication solutions. We engage students in learning opportunities through which they discover their interests in purposeful ways, and offer practical experience in using technology related to classroom activities in core/option subjects. Areas we focus upon include:

- Audio/Video Productions
- Audio Techniques
- Coding Club
- Digital Design
- Green Screen
- Graphic Design
- Keynote Presentations
- Photography
- Robotics Club
- Script Writing
- Web Design
- Word Processing

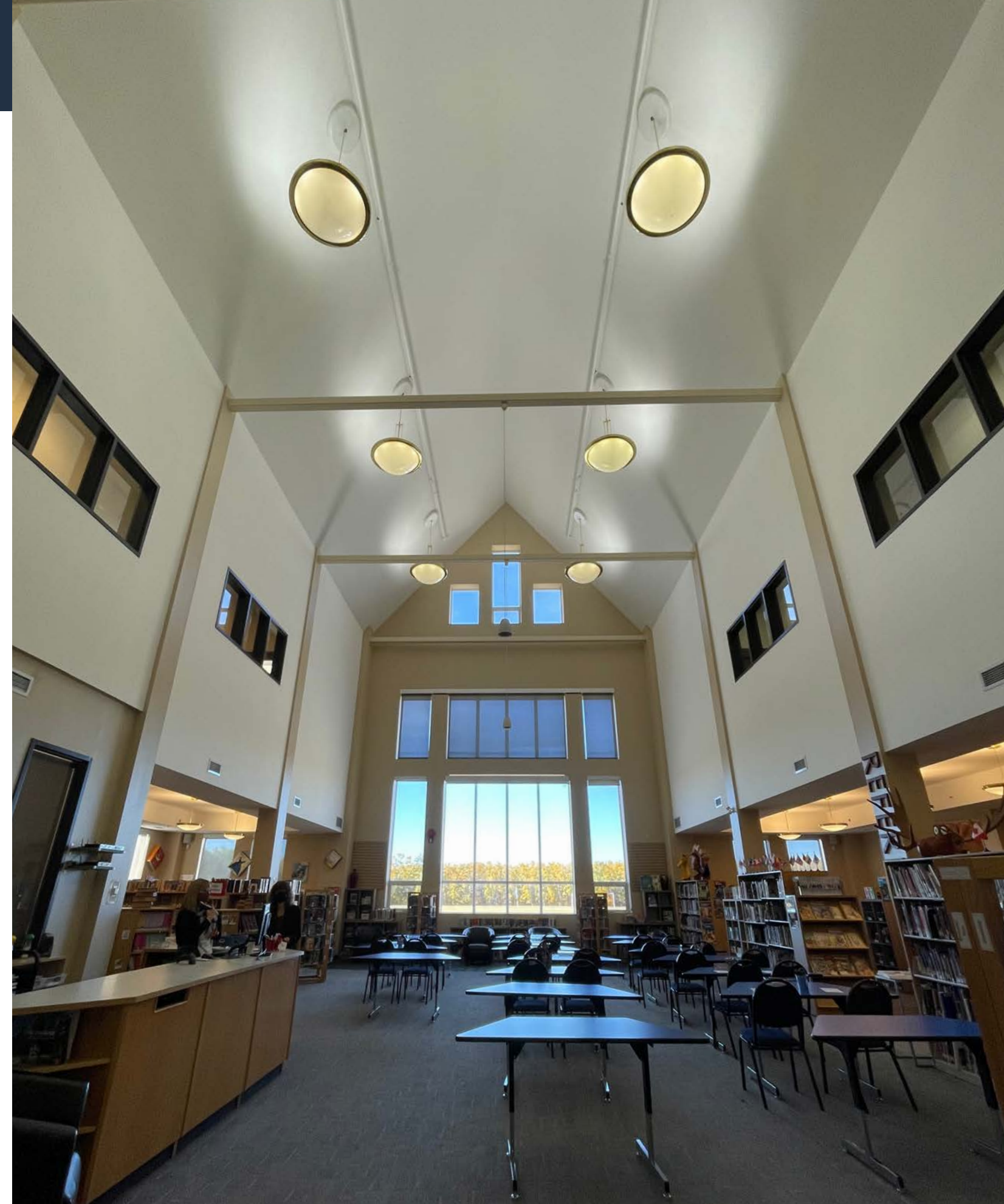


WEBBER ACADEMY LIBRARY

Through its collections and services the Chwyl library supports and enhances the programme of studies at Webber Academy. The library provides an ideal environment for the acquisition of knowledge, encourages intellectual enquiry, and an independent approach to learning, and endeavours to give students the skills they need to take them to university and beyond. The library promotes and encourages the practice of reading for pleasure with particular emphasis on fiction through the promotion of authors, award-winning titles, and new releases. Author visits, buddy reading, and celebrations are also fun and exciting ways in which we help our students develop a lifelong love of reading.

The Chwyl Library has a collection of over 25,000 books and other items, as well as a considerable number of online resources. There is plenty to choose from in the comprehensive and varied selection of titles that accommodate the whole school covering fiction, nonfiction, poetry, picture books, and graphic novels. We are also a learning commons with access to laptops and iPads, as well as an easily accessible publishing and research centre. Students and teachers are afforded the opportunity to work with the teacher-librarian and library technician to learn valuable research skills using both traditional and electronic methods.

Regular library instructional time takes place for Junior Kindergarten to Grade 6, reading classes for junior high students, as well as easy access to the library and all of its resources for students from Grades 7 to 12.





The Webber Academy Performing Arts Centre is home to a 500 seat state-of-the-art theatre, two large studio performance rooms, and a spacious lobby

EXTRACURRICULAR PROGRAMMES

All students benefit from exposure to a wide variety of activities. At Webber Academy we believe our students should have the opportunity to experience new challenges from all segments of the programme. Therefore, lunch hour and after-school activities are made available to students who wish to expand their horizons, learn a new skill, or enjoy the camaraderie of others. Activities are offered on the basis of expertise amongst the staff and parent volunteers. The following are examples of some of the activities offered at Webber Academy:

- Badminton
- Ballet
- Band (concert and jazz)
- Basketball
- Chess Club
- Choir
- Coding Club
- Cross Country Running
- Dance Explosion
- Debate Club
- Designer Genes Club
- Drama
- Grad Committee
- Golf
- GSA
- Intramurals
- Math Olympics
- Model United Nations
- Reach for the Top
- Robotics Club
- Rugby
- Science Fair
- Science Olympics
- Soccer
- Spelling Bee
- Speech Club
- Student Councils
- Track & Field
- Voices: Art and Literary Magazine
- Volleyball

FIELD TRIPS/ENRICHMENT OPPORTUNITIES

Throughout the school year, students at Webber Academy are given the opportunity to visit various programmes within Calgary (museums, the Science Centre, Calgary Zoo, Heritage Park, etc.), as well as attend special matinées of concerts and theatrical productions. In addition, special presentations also occur at the school. These opportunities serve to enhance the school's programme of studies. Grade 5 students make an annual trip to Edmonton to visit the Alberta Legislature, and Grade 6 students enjoy an annual trip to Ottawa.

Occasionally, excursions are planned outside of Calgary which are designed to enhance individual programme needs. These excursions are optional, and costs for such excursions vary according to the programme. The cost for these excursions is not included in the school fees.



Webber Academy students on a Spanish language immersion trip to Spain.



FOOD SERVICES

A proper diet and nutrition are essential for the development of young minds and bodies to learn and be successful academically.

Webber Academy strives to provide healthy meal options to all students in Grades 1 through 12. Students in the Kindercentre must bring their own lunch and snack options.

A cafeteria food services I.D. card will be issued on the first day of school. Students must have their I.D. card to purchase items from the cafeteria. Parents can view their child's cafeteria account online. If you do not want your child to have access to the cafeteria, please contact the front office.

For more information, including menu and daily specials, please visit our website at www.webberacademy.ca.



Webber Academy Executive Chef, Thuy Le Luong and her teammates, are congratulated by Mayor Nenshi on their gold medal performance at the Hong Kong International Culinary Classic Competition.





Class of 2021 graduates, Nandipa Dawodu (left) and Ling Long Yang (right)

ADMISSION TO WEBBER ACADEMY

The admissions process helps prospective students and their families become familiar with Webber Academy, and assists the school in learning more about an applicant. The nurturing, energetic environment of Webber Academy is such that bright students who are keen to accept the challenge of an enriched academic programme, have a positive attitude, are eager to work collaboratively with others in a wide variety of activities, and develop a strong sense of citizenship, will thrive in the Webber Academy community.

The main goal of Webber Academy is to prepare students for educational opportunities in high-calibre post-secondary institutions, as well as for leadership roles in greater society. The objective when considering a student's application is to determine whether or not the individual possesses the academic potential and personal motivation to meet these expectations.

In determining a candidate's admissibility, the Director of Admissions will consider a student's academic record, aptitude and behaviour, citizenship qualities, and extracurricular interests. An application, entrance exam and/or recent psycho-educational assessment are required before a decision will be made. Our admissions team may request a personal interview, classroom visit, and permission to contact a candidate's current school to help us reach a complete assessment.

Siblings of existing students are given preference over other candidates as long as they meet the entrance requirements.

International Applications

We welcome international applications to all grades from JK to 12. The application process is the same as described above; however, students will need to demonstrate proficiency in English appropriate to the grade for which they are seeking a placement, and will need to be able to fully participate in classroom instruction. Webber Academy does not have English as a Second Language (ESL) or English Language Learner (ELL) programs. Depending on residency or visa status, international students may be subject to an additional tuition charge.

ADMISSION PROCESS

STEP ONE: APPLICATION

Apply online. Please have the following documents ready to submit with the application:

- A non-refundable application fee of \$100.00
- A copy of your child's birth certificate
- A small photograph of applicant
- A copy of your child's report cards from the last two years (not required for Junior and Senior Kindergarten applicants)
- A copy of educational testing (if available) such as CCAT, WISC, WIAT, etc.
- A copy of your child's passport
- A copy of your child's Canadian Citizenship (if applicable).

Additional documents for non-Canadian citizens:

- A copy of your child's permanent residence card or a copy of the parent's work permit

Additional grade-specific information may be required such as a short video (Junior and Senior Kindergarten) or a personal statement (Grades 9-12). An email will be sent to acknowledge receipt of your application.

Please note that incomplete applications will not be processed.





STEP TWO: ENTRANCE TESTING AND CLASSROOM VISITS

Admissions testing/assessment is used for all students applying to Senior Kindergarten to Grade 12.

- SK applicants will be invited in to complete an assessment pack. Those who perform well on the assessment may be invited for a classroom visit.
- Grade 1-5 applicants will complete one of our in-house assessment packs, which focuses on skills and ability in English and Math. Testing will only be arranged for applicants with strong report cards.
- Grades 6-12 applicants are required to write the Secondary School Admissions Test (SSAT). To register for the SSAT, please visit www.ssat.org

Submission of recent educational testing by a registered psychologist may be accepted in place of our admission tests in lower elementary grades (CCAT, IOWA, NWEA, STAAR, WIAT, WISC, etc.).

STEP THREE: CLASSROOM VISITS OR ALTERNATIVE

Local candidates who score within the expected admission guidelines will be invited to attend a classroom visit at Webber Academy. This visit provides the child with an opportunity to learn about our school and meet other students. As well, this visit allows our teaching staff an opportunity to spend time with the candidate and determine whether the school is a good fit for the student's needs and interests.

Distance/international applicants who are unable to attend a classroom visit will be expected to arrange for our Confidential School Report to be completed by their current teacher and/or principal.

Alternative interviews or activities may be used in lieu of classroom visits in certain circumstances.

STEP FOUR: ACCEPTANCE

Once the above steps are complete, the Admissions team will review the application. Admissions decisions are made with the best interests of the student in mind and are based on a combination of the application, report card marks, entrance test scores, interviews, and teacher recommendations. Qualified applicants for whom there are no positions available will be placed on the waiting list. If a vacancy for your child arises, we will contact you immediately. If no placements become available within the school year, we will defer your application to the following school year at your request.

Junior Kindergarten Admissions

Our Junior Kindergarten (JK) classes run Monday to Friday, 8:30 a.m. to 3:30 p.m., throughout the regular school year. The Junior Kindergarten programme is specifically designed for children turning four years old prior to December 31st of the year they will be enrolled in school. Children participate in play-based learning activities which develop their early literacy and numeracy skills and help foster social development. In addition, our Junior Kindergarten students benefit from separate classes in Music, Physical Education, and Spanish.

No formal testing is completed for our youngest applicants; however, families who have submitted completed applications will be invited to attend an interview with the Director of Admissions and will need to arrange for a Confidential Report to be filled out by their child's current daycare or preschool programme. Junior Kindergarten applicants with a strong report and interview will be invited to attend a play workshop. Teachers and administration will be present during the workshop to make observations and determine an applicant's readiness for our Junior Kindergarten programme. Attributes such as behaviour, language development, willingness to join others at play, participation in activities, and social interaction are taken into consideration when making placement decisions.

For applicants to the Junior Kindergarten programme, interviews and class visits will take place from mid-November to mid-December prior to the year of starting. We therefore recommend that applications are submitted by the end of October. Spaces are limited and the date of application is considered as long as your child meets our admissions criteria.

Children who will not turn four before December 31st must apply for the following school year.

Senior Kindergarten Admissions

Webber Academy has three full-day classes of Senior Kindergarten (SK) open to candidates turning five years old prior to December 31st of the year they will be enrolled in school. These classes run Monday to Friday, 8:30 a.m. to 3:30 p.m. With three SK classes, but only two JK classes, we have good availability of placements in our Senior Kindergarten programme.

Applicant families may be invited to attend an interview with the Director of Admissions. Following this, applicants will be invited to the school to complete an assessment pack (with a focus on math and English skills), and to attend a class visit.

The admissions process for SK commences in winter and run through to the spring.

Information Evening Dates

A series of information evenings are held throughout the school year. Tours of the school will follow the presentations. Guests are not required to register for these presentations. Please view our website for specific dates.

School Tours

Visit our website to book a private tour.

Tuition Fees

Please consult our website for annual tuition fees.

Payment Methods

Each year an initial fee payment of \$3,000 is required by February 1st to confirm enrollment. An additional payment of \$6,000 toward the tuition fee is required by April 1st. For the balance of tuition fees, there are three payment options:

- Option 1: One payment on August 15th
- Option 2: Balance due plus interest divided between two payments — one on August 15th and the second on December 15th
- Option 3: Balance due plus interest divided into six consecutive monthly payments commencing August 15th to January 15th of the next year.

Various methods of payment are accepted including: cash, debit, cheque, credit card (through PlastiQ - <https://webberacademyfoundation.plastiq.com>), Interac e-Transfer Autodeposit (to payments@webberacademy.ca) and payment through online banking (this involves setting up Webber Academy Foundation as a "payee" online through your financial institution). All fees paid to Webber Academy are considered non-refundable and non-transferable. NSF cheques will be subject to an administrative fee of \$25.

Student Enrollment Bond

A \$6,000 enrolment bond (deposit) is required for each student attending Webber Academy. This is a non-interest bearing, one-time payment for enrolment in Webber Academy. The enrolment bond payment is required by August 15th or at the time of acceptance. The student enrolment bond will be refunded after the student either graduates or withdraws from the school. Enrolment bond refunds will be issued by August 1st. Any outstanding balances owed to Webber Academy will be deducted from the bond refund.



Dr. Neil Webber and with Col. Eileen Collins, retired Space Shuttle Commander & NASA Astronaut

Transportation

Busing is available for those who require this service for an additional charge. Please consult our website for current rates. Bus tickets are also available for occasional riders. Tickets may be purchased from the front office. Registration forms and post-dated cheques are to be submitted to the front office by May 31st so that bus routes may be determined in a timely manner. Students requiring bus service after the registration deadline will be added to existing bus routes and pre-determined stops.

Provincial Funding

On September 30th of each school year, enrolment counts are submitted to Alberta Education for provincial funding. Webber Academy will not receive full funding for any students registering after the September 30th deadline. As a result, parents would be required to pay a pro-rated portion of this grant, in addition to payment of a pro-rated portion of the tuition fees.

Invest in your child's future and receive a tax break! We would like to inform you of an important tax-saving opportunity. Webber Academy has seen tremendous growth and expansion over the past several years. Our goal is to continue to provide the best possible facilities and educational tools for our students. The future plans for Webber Academy are very exciting and we need your help to make our vision a reality.

The \$6,000 student enrollment bond required by each student is a non-interest-bearing loan. If the bond were to be donated to Webber Academy, an income tax receipt would be issued and may be used when filing your tax return.

The alternative, if you choose not to donate your bond, is to have the \$6,000 refunded to you after your child graduates or withdraws from the school. However, if your child will attend Webber Academy for a number of years, the net present value of the bond could be such that a donation now may be advantageous to you.

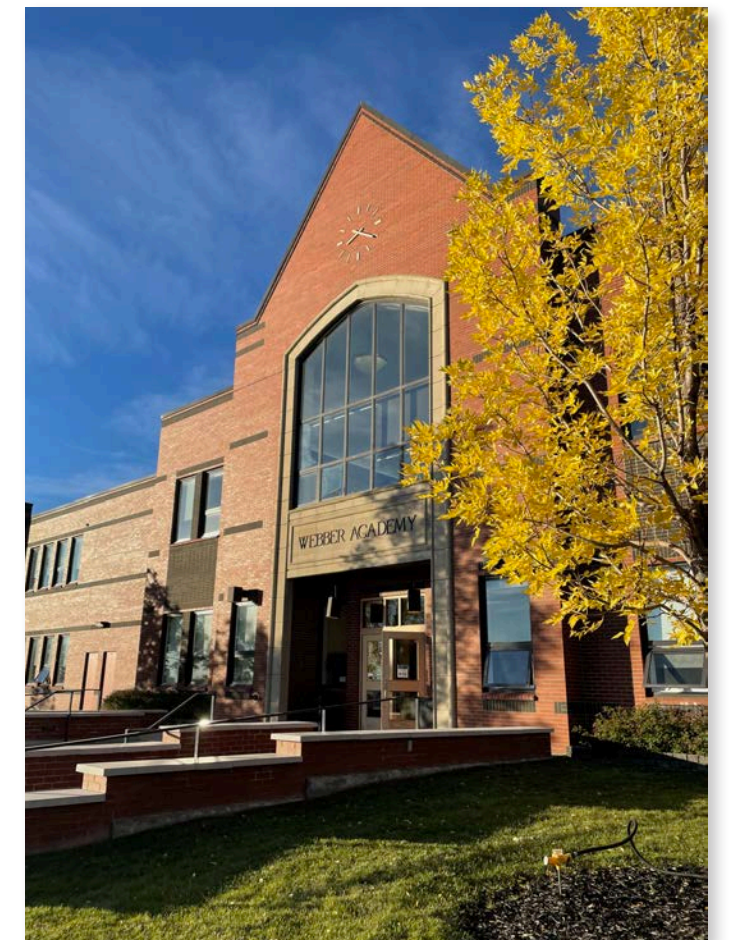
Webber Academy is appreciative of all contributions and will provide the donor with the opportunity to direct their funds to particular areas of interest. Our list of needs includes the purchase of science equipment, computer technology equipment, library resources, and

physical education equipment. To make a donation, you may email your information to lornewebber@webberacademy.ca, or phone Mr. Lorne Webber at (403) 277-4700. We will recognize all donations over \$1000 on our donor board. We hope you will consider a donation to our school.

FINANCIAL SUPPORT

Webber Academy Foundation

Crucial to the success of Webber Academy is the active support of individuals who recognize the importance of quality education and are prepared to support the school through donations. Receipts are offered for all gifts given in support of this notable cause. To assist in this effort, we have established the charitable Webber Academy Foundation to oversee all aspects of gift-giving. While gifts of cash are of immediate benefit to us; other gifts such as property, in-kind support, securities, and bequests may also be donated. These gifts, to a legislated maximum, are fully tax-deductible.





Parents are encouraged to assist the Board of Directors in the raising of monies for the school; however, fundraising efforts will be minimal in order that all the families may concentrate on the academic success of their children. Families can expect to assist in one major fundraising activity for the school each year.

Bursary and Scholarship Funds

A bursary fund has been established and provides bursaries to families with children who attend Webber Academy and are not able to financially meet the tuition fees. The bursary fund is supported through corporate and community donations, and from revenues generated by Webber Academy.

The amount of the bursary is based on the family's net income from the previous year, taking into account the number of dependents in the family and whether there has been a substantial change in the ability of the family to earn an income. Unique circumstances or special situations are also taken into consideration.

Bursary applications are reviewed and final decisions are determined by the Bursary Committee of Webber Academy's Board of Directors.

Scholarships are also provided to meritorious students attending Webber Academy, and to attract high-caliber students to Webber Academy.

Overdue Accounts

Outstanding balances not paid in accordance with the fee schedule and payment options will be subject to an interest charge of 24% per annum.

Any family who has an unpaid balance with Webber Academy must pay that outstanding balance before their child will be allowed to register for the subsequent year. In addition, satisfactory payment terms must be in place for the following year.

Withdrawals

If a student is not returning for the next school year, please submit written notice of intent. The final notification deadline (without penalty) is March 1st. If written notice is received after March 1st, all fees due up



until notification is received, would be owed, in accordance with the tuition fee payment schedule. Any outstanding fees will be deducted from the enrolment bond. Upon acceptance of the placement offered to their child, parents have an obligation to pay the fees charged according to the forgoing payment schedule. No portion of the fees, paid or due, will be refunded or cancelled in the event of a student's absence, withdrawal, or dismissal from Webber Academy. If a student is suspended or expelled, fees will not be refunded by Webber Academy. (This protects the school from financial loss resulting from unexpected withdrawals.) After March 1st, the person(s) accepting financial responsibility for a student will become contracted for the amount of fees for the upcoming school year.

After School Programmes

After-school care is available to students in JK until 5:00 p.m. and for SK to Grade 5 until 6:00 p.m. at an additional hourly cost. Study Hall is accessible for students in Grades 6 to 12.

Investing in Our Community

In keeping with the school's motto to "prepare students to thrive in university and beyond", Webber Academy recognizes the importance of providing opportunities for students at all levels to be of service – to the school community, to the local community, and to the global community – in order that they may engage in experiences beyond academics.

Encouraging our students to become involved in humanitarian initiatives allow them to look beyond their own immediate needs, gain a global perspective, and make contributions to society. When we nurture the spirit of giving in our students, we cultivate values and build character traits that will allow them to make positive contributions to our world.

Service and community involvement opportunities exist at all levels.

The elementary division's community service club, which is comprised of teacher coordinators and Division II students, is responsible for planning activities that increase student awareness of needs in both the Calgary and greater (world) communities. Annual community service and record-breaking fundraising initiatives demonstrate our commitment to contributing positively to society.

Annually, Students Collect Non-Perishable Food Items For Donation To The Calgary Food Bank

The school community is also committed to ongoing support for the city's homeless population. The "Sock it to Wylie" campaign provides warm socks and mittens for a number of individuals in need of donated clothing and outerwear.

Community involvement is apparent in both the elementary division and the senior high division. The Grade 12 Legacy Project involves the simple task of recycling bottles and containers. The students work with Kiva, an organization whose mission is to "connect people through lending for the sake of alleviating poverty." Money raised through the recyclables is used for microloans: funds are lent to entrepreneurs in developing countries who use the money to improve their own lives through small business ventures (i.e.

creating a fruit stand to sell produce). As time passes, the entrepreneur repays the loan and the money is lent out again to another individual for another venture. The more money that our Grade 12 students are able to raise, the more microloans they are able to establish, which in turn helps more people in underprivileged countries.

School-wide philanthropy is seen every fall as the school engages in its largest charitable fundraiser of the year: the Terry Fox Run. The entire school community is brought together to commemorate the bravery of Terry Fox and to continue his journey toward finding a cure for cancer. Because of the efforts of our students, families, and teachers, the school raised over \$30,000 toward cancer research this past September. Webber Academy has been recognized several times by the Terry Fox Foundation as being the top fundraising school in Alberta.

As a school community, it is greatly rewarding to see the efforts put forth by our students and teachers to reach out and make an impact on others. These efforts, in turn, will hopefully leave a positive imprint on humanity as our students work to enact change and shape the face of our changing world.



The Phys.Ed. 30 class are responsible for organizing the annual Terry Fox run every September.



Grading and Ranking Procedures

Grading in individual classes is done by percentage with no grade-equivalent calculations performed unless requested by American schools to which students are applying.

Test Score Information

The Alberta provincial average on diploma examinations in courses we offer is 68.3%. Webber Academy students averaged 87.3% in 2019 on diploma examinations across the same subjects.

Over 230 Advanced Placement exams were written by Webber Academy high school students in 2019. Student scores can range from 1 to 5, with 5 being the highest. Over 98% of Webber Academy students scored 3 or higher, and the overall average was 4.49. This compares favourably to the provincial average of 3.60



(2018) and the international average of 2.89 (2018).

College Acceptance

In Webber Academy's fifteen graduating classes, 99.5% of the students were accepted by four-year universities and colleges. Of these, approximately 90% have attended schools within Canada. Schools accepting Webber Academy graduates include:

CANADIAN INSTITUTIONS

Bishop's University
Carleton University
Concordia University
Dalhousie University
McGill University
McMaster University
Memorial University
Mount Allison University
Queen's University
Ryerson University
Simon Fraser University
St. Francis Xavier University
University of Alberta
University of British Columbia
University of Calgary
University of Guelph
University of King's College
University of Ottawa
University of Toronto
University of Victoria
University of Waterloo
Western University
Wilfred Laurier University
York University

OUTSIDE NORTH AMERICA

Imperial University (UK)
Hope Medical Institute (Poland)
King's College London (UK)
Melbourne University (Australia)
Monash University (Australia)
University College, Dublin (UK)
University of the Arts, London (UK)
University of Bath (UK)
University of Cambridge (UK)
University of Edinburgh (UK)
University of Exeter (UK)
University of Glasgow (UK)
University of Oxford (UK)
University of St. Andrews (UK)

U.S.

Amherst College
Baylor University
Boston University
Brown University
Carnegie Mellon University
Clemson University
Columbia University
Cornell University
Dartmouth College
Duke University

Georgetown University
Georgia Institute of Technology
Harvard University
Johns Hopkins University
New York University
Northwestern University
Princeton University
Purdue University
Rice University
Santa Clara University
Stanford University
Texas Tech University
Tufts University
University of California, Berkeley
University of California, Davis
University of California, Los Angeles
University of California, San Diego
University of Michigan
University of North Carolina, Chapel Hill
University of Notre Dame
University of Pennsylvania
University of Southern California
University of Texas
Washington University in St. Louis
Williams College
Yale University



GENERAL SCHOOL CONTACT INFORMATION

FOUNDER, PRESIDENT AND HEAD OF SCHOOL

Dr. Neil Webber
403-277-4700 (ext. 222)

VICE PRESIDENT ADMINISTRATION

Barbara Webber
403-277-4700 (ext. 223)

HEAD OF ADVANCEMENT & COMMUNICATIONS

Lorne Webber
403-277-4700 (ext. 302)

HEAD OF ELEMENTARY

Corrie Chalifoux
403-277-4700 (ext. 224)

HEAD OF SENIOR SCHOOL

Christina Clouston
403-277-4700 (ext. 301)

DIRECTOR OF ADMISSIONS

Paul Sutherland
403-277-4700 (ext. 225)

DIRECTOR OF FINANCE

Rhonda Burke
403-277-4700 (ext. 289)

EXECUTIVE ASSISTANT & OFFICE MANAGER

Corri Esposito
403-277-4700 (ext. 334)

DIRECTOR OF LIBRARY SERVICES

Mrs. Jemmie Silver
403-277-4700 (ext. 246)

DIRECTOR OF STUDENT AFFAIRS

Ms. Julia Webber
403-277-4700 (ext. 337)

DIRECTOR OF ATHLETICS

Mr. Joël Chalifoux
403-277-4700 (ext. 229)

ACADEMIC & CAREER COUNSELLORS

Ms. Leanne Shirliffe
403-277-4700 (ext. 308)

Mrs. Jennifer Parker
403-277-4700 (ext. 253)

GENERAL INQUIRIES

Front Office
403-277-4700

FACSIMILE

403-277-2770

WEBSITE

www.webberacademy.ca

MAILING ADDRESS

1515-93 Street SW
Calgary, AB
T3H 4A8

STAFF EMAIL

Type the first initial of the first name, plus full last name@webberacademy.ca

Example: jdoe@webberacademy.ca
Check Webber Academy's website for full listings.





PREPARING STUDENTS TO THRIVE IN UNIVERSITY AND BEYOND



Phone 403-277-4700
Fax 403-277-2770
webberacademy.ca